

TrustLink Connectors

Rugged reliability – excellent performance



Built with advanced technology, robust materials, and MacArtney connectivity expertise, the TrustLink series features a stainless steel construction as standard and is available in three shell sizes compatible with industry norms. These high-density connectors are suitable for the harshest marine environments, offering rugged durability and reliability. Their compact modular design is advantageous where limited space is a factor.

The TrustLink range is available in several configurations from 4 to 37 electrical contacts and a Hybrid with 2FO and 4E contacts, offering excellent flexibility to subsea equipment and system operators.

Available in stainless steel (as standard) or titanium, it offers a service life of up to 25 years. Titanium delivers inherent corrosion resistance, whereas stainless steel may require cathodic protection, providing operators flexibility to match material choice to operational conditions.

All electrical connectors are available globally from MacArtney entities as a MacArtney-terminated assembly.

Reversed male/female inserts

The TrustLink series supports reversed male/female inserts, allowing either type to be mounted in the same housing. This design flexibility makes it easier to adapt to system requirements and simplifies connector integration.

Highlighted specifications

- Depth rating 600 bar/8,700 psi
- Available in 3 standard shell sizes
- Up to 25 A rating
- Designed and tested to the EN 60664-1 and EN 50393-Table 5 standard

Features and benefits

- Available globally from MacArtney entities
- CCP connectors are available in overmould and boot versions
- Interchangeable and reversible male/female inserts
- Compact modular design
- Anti-seizing surface
- Available in multiple configurations
- Terminated by MacArtney only

Applications

- ROV/AUV/trenchers
- Naval systems and equipment
- Oceanographic systems, equipment and instrumentation solutions
- Seismic/ocean bottom systems
- Subsea nodes
- Underwater camera, video and lighting
- Survey systems and instrumentation
- Offshore oil and gas systems
- Subsea renewable systems
- Power supply for underwater pumps
- Underwater telemetry systems
- Dredging
- Harsh environment monitoring systems

Options

- Water blocked in case of cable damage*
- Available for pressure balanced systems*
- Back pressure rated to 600 bar*
- Other materials are available on request

*only on electrical 4-37 contact



Specifications - Power/Signal - size A

Electrical

	4 contacts	8 contacts	12 contacts
Contact size:	14 AWG	18 AWG	20 AWG
Contact size:	2.1 mm ²	0.8 mm ²	0.5 mm ²
Voltage rating:	600 VAC/VDC	600 VAC/VDC	250 VAC/VDC
Dielectric withstand:	4,000 VAC	4,000 VAC	2,500 VAC
Current rating			
Up to 4 contacts loaded:	25 A	12 A	12 A
Current rating			
Up to 10 contacts loaded:		8 A	7 A
Current rating			
All contacts loaded:	25 A	8 A	7 A

Materials

Metal shell housing:	Diamond polished AISI 316*
	Diamond polished Titanium G II
Locking sleeves:	Diamond polished
	Nickel Aluminium Bronze
	C63000*
	Diamond polished Titanium G II
Pressure cap:	Diamond polished AISI 316*
	Diamond polished Titanium G II
Dust cap:	POM
Electrical insert:	Glass reinforced high performance thermoplastic
O-ring:	FPM-75

Environmental

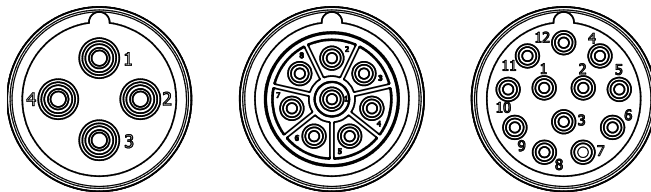
Qualified pressure tested:	Mated 720 bar/10,400 psi
Depth rating:	Mated 600 bar/8,700 psi
Temperature rating:	
Water:	-4 to 70°C/25 to 158°F
Air:	-25 to 70°C/13 to 158°F
Storage:	-25 to 70°C/13 to 158°F

Standards

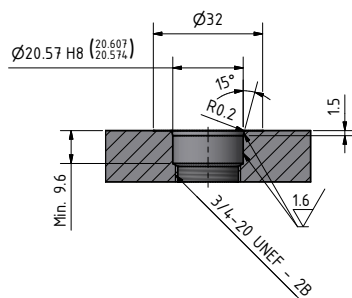
Creepage distances and clearance:	EN 60664-1, tables F2 and F4
Electrical low voltage tests:	EN 50393, table 5

*Other materials on request

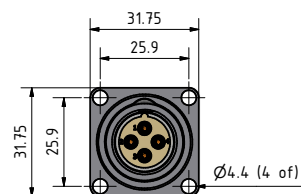
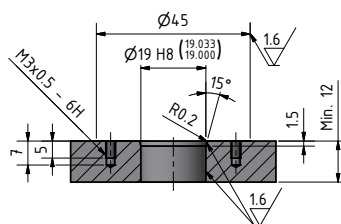
Face view (male)



Mounting hole for BCR SA

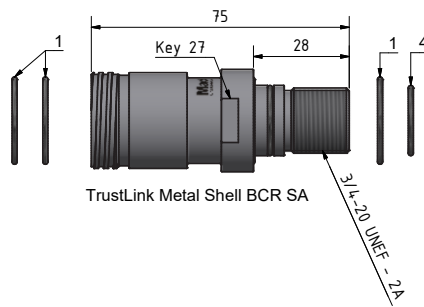
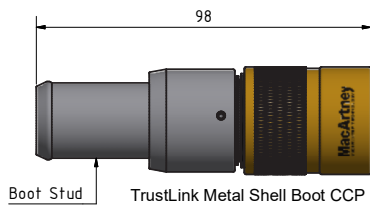
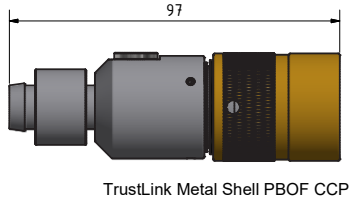
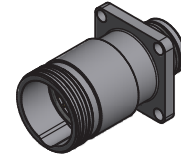
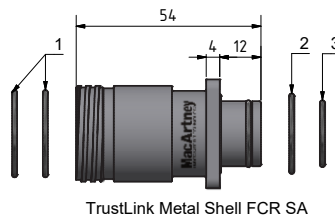
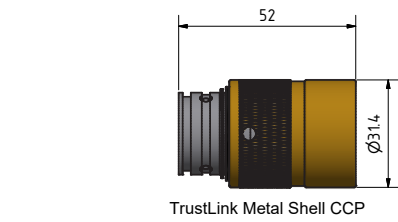


Mounting hole for FCR SA

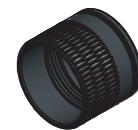
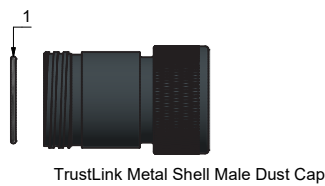
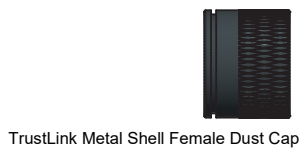
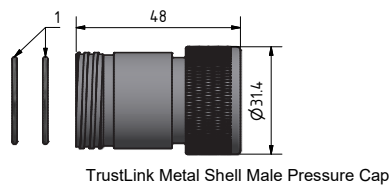
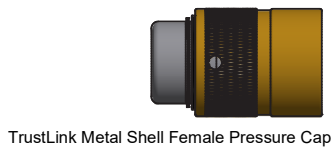
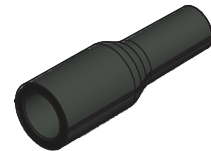


Terminated by MacArtney only.

TrustLink



Boot A-B size for cable Ø7.5-Ø9.5
Boot A-B size for cable Ø9.5-Ø12
Boot A-B size for cable Ø12-Ø15



O-rings:

1. Ø22.5 x 1.5 FPM-75
2. Ø20.5 x 1.5 FPM-75
3. Ø16.5 x 1.5 FPM-75
4. Ø17.5 x 1.5 FPM-75

All measurements in millimetres (mm)

For technical information
and instructions
Scan QR code



Specifications - Power/Signal - size B

Electrical

	16 contacts		19 contacts
Contact size:	2 x 16 AWG	14 x 20 AWG	20 AWG
Contact size:	1.3 mm ²	0.5 mm ²	0.5 mm ²
Voltage rating:	600 VAC/VDC	250 VAC/VDC	250 VAC/VDC
Dielectric withstand:	4,000 VAC	2,500 VAC	2,500 VAC
Current rating			
Up to 4 contacts loaded:	20 A	12 A	12 A
Current rating			
Up to 10 contacts loaded:	11 A	7 A	7 A
Current rating			
All contacts loaded:	9 A	6 A	6 A

Materials

Metal shell housing:	Diamond polished AISI 316*
	Diamond polished Titanium G II
Locking sleeves:	Diamond polished
	Nickel Aluminium Bronze
	C63000*
	Diamond polished Titanium G II
Pressure cap:	Diamond polished AISI 316*
	Diamond polished Titanium G II
Dust cap:	POM
Electrical insert:	Glass reinforced high performance thermoplastic
O-ring:	FPM-75

Environmental

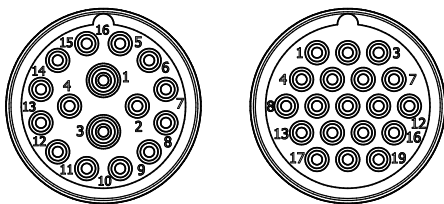
Qualified pressure tested:	Mated 720 bar/10,400 psi
Depth rating:	Mated 600 bar/8,700 psi
Temperature rating:	
Water:	-4 to 70°C/25 to 158°F
Air:	-25 to 70°C/13 to 158°F
Storage:	-25 to 70°C/13 to 158°F

Standards

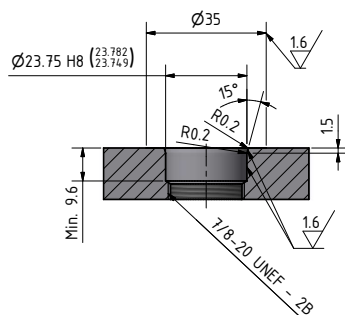
Creepage distances and clearance:	EN 60664-1, tables F2 and F4
Electrical low voltage tests:	EN 50393, table 5

*Other materials on request

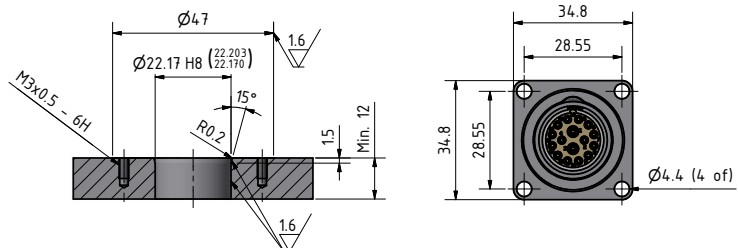
Face view (male)



Mounting hole for BCR SB

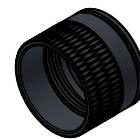
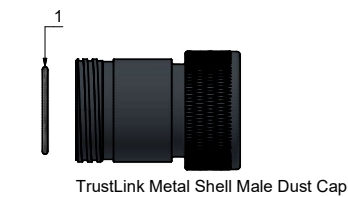
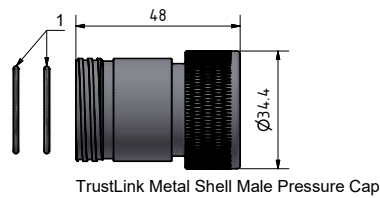
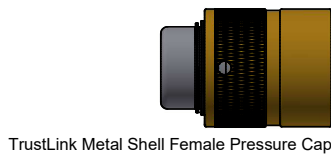
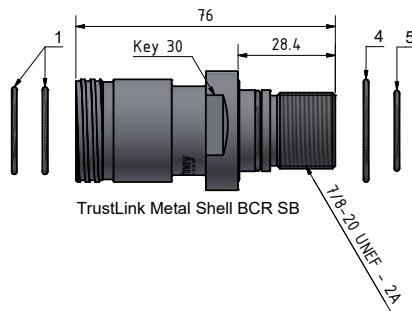
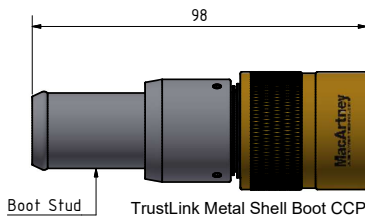
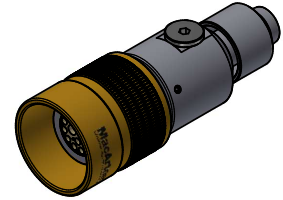
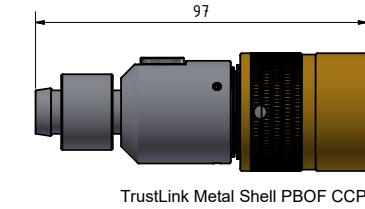
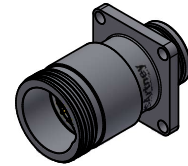
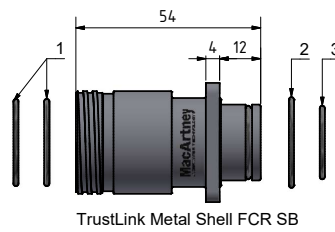
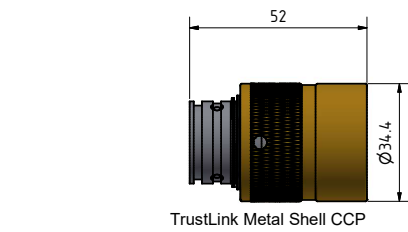


Mounting hole for FCR SB



Terminated by MacArtney only.

TrustLink



O-rings:

1. Ø22.5 x 1.5 FPM-75
2. Ø23.5 x 1.5 FPM-75
3. Ø18.5 x 1.5 FPM-75
4. Ø27.0 x 1.5 FPM-75
5. Ø20.5 x 1.5 FPM-75

All measurements in millimetres (mm)

For technical information
and instructions
Scan QR code



Specifications - Power/Signal - size C

Electrical

	26 contacts	37contacts
Contact size:	20 AWG	20 AWG
Contact size:	0.5 mm ²	0.5 mm ²
Voltage rating:	250 VAC/VDC	250 VAC/VDC
Dielectric withstand:	2,500 VAC	2,500 VAC
Current rating		
Up to 4 contacts loaded:	12 A	12 A
Current rating		
Up to 10 contacts loaded:	7 A	7 A
Current rating		
All contacts loaded:	5 A	5 A

Materials

Metal shell housing:	Diamond polished AISI 316*
	Diamond polished Titanium G II
Locking sleeves:	Diamond polished
	Nickel Aluminium Bronze
	C63000*
	Diamond polished Titanium G II
Pressure cap:	Diamond polished AISI 316*
	Diamond polished Titanium G II
Dust cap:	POM
Electrical insert:	Glass reinforced high performance thermoplastic
O-ring:	FPM-75

Environmental

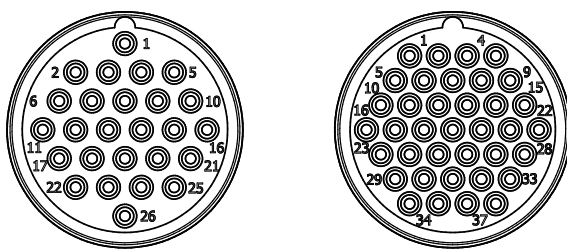
Qualified pressure tested:	Mated 720 bar/10,400 psi
Depth rating:	Mated 600 bar/8,700 psi
Temperature rating:	
Water:	-4 to 70°C/25 to 158°F
Air:	-25 to 70°C/13 to 158°F
Storage:	-25 to 70°C/13 to 158°F

Standards

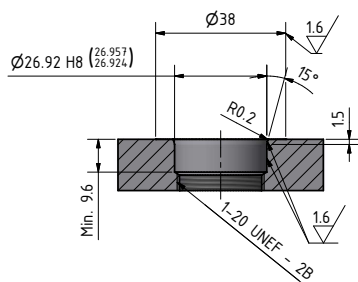
Creepage distances and clearance:	EN 60664-1, tables F2 and F4
Electrical low voltage tests:	EN 50393, table 5

*Other materials on request

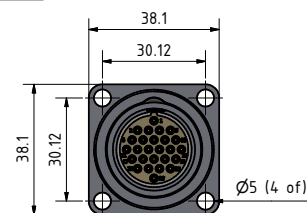
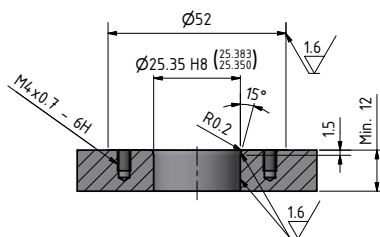
Face view (male)



Mounting hole for BCR SC

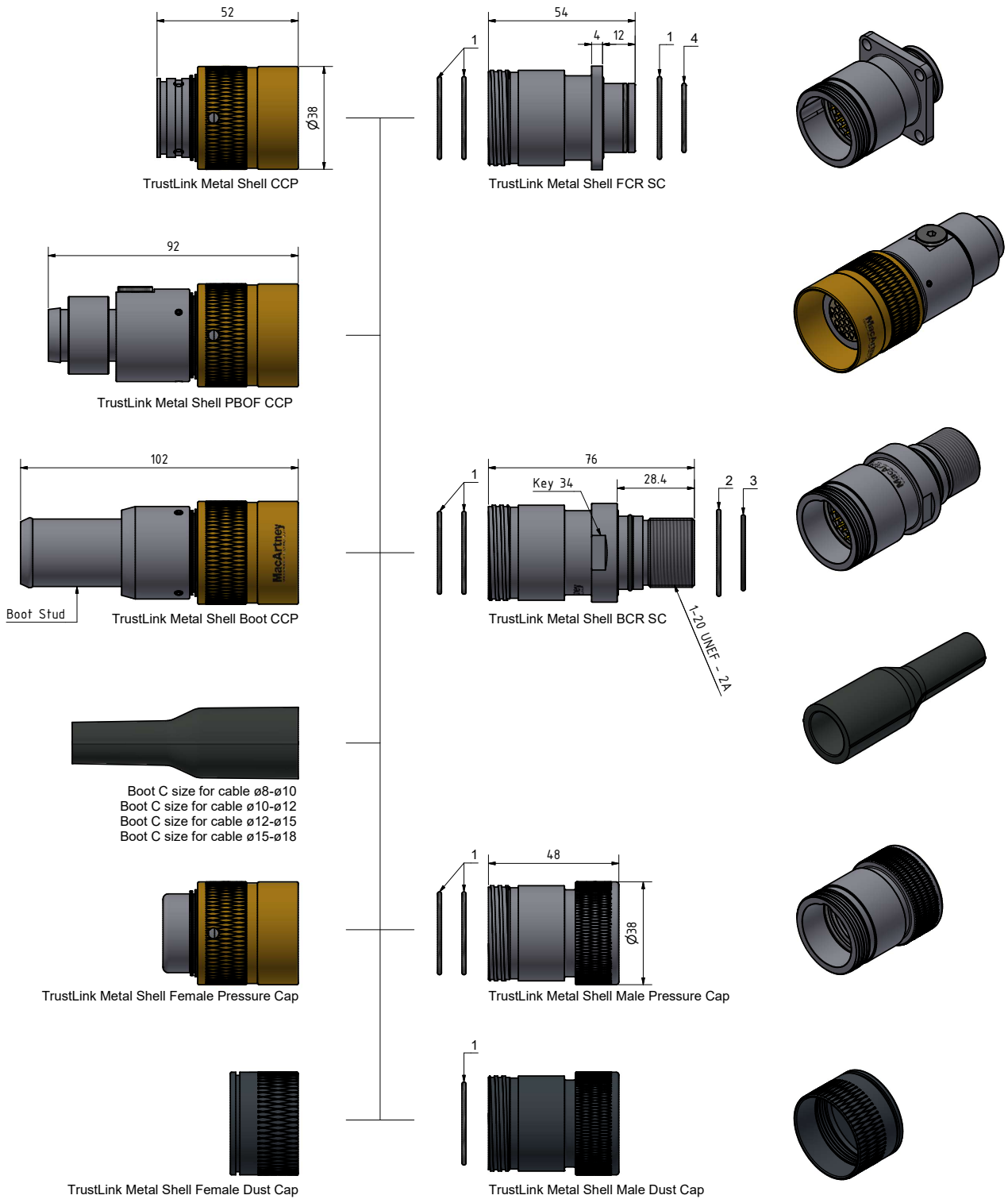


Mounting hole for FCR SC



Terminated by MacArtney only.

TrustLink



O-rings:

1. ø27.5 x 1.5 FPM-75
2. ø29.0 x 1.5 FPM-75
3. ø24.5 x 1.5 FPM-75
4. ø22.5 x 1.5 FPM-75

Blind plug:

6. 3/16" SAE port (Thread 3/8"-24UNF)

All measurements in millimetres (mm)

For technical information
and instructions

Scan QR code



Specifications - Hybrid

Electrical

	4 contacts
Contact size:	2 x 16 AWG
Voltage rating:	600 VAC/800 VDC
Current rating:	13 A
Contact size:	2 x 20 AWG
Voltage rating:	250 VAC/350 VDC
Current rating:	5 A
Current rating - all contacts loaded:	36 A

Materials

Metal shell housing:	Diamond polished AISI 316*
Locking sleeves:	Diamond polished Nickel Aluminium Bronze C63000*
Pressure cap:	Diamond polished AISI 316*
Dust cap:	POM
Insert:	Stainless steel
O-ring:	FPM-75

*Other materials on request

Optical (single mode)

Wavelength:	1,310 to 1,550 nm
Attenuation:	Max 2.5 dB, Typical 1.0-1.5 dB (when mated)
Fibre types:	9/125 µm
Optical passes:	2 passes

Optical specifications (multi mode)

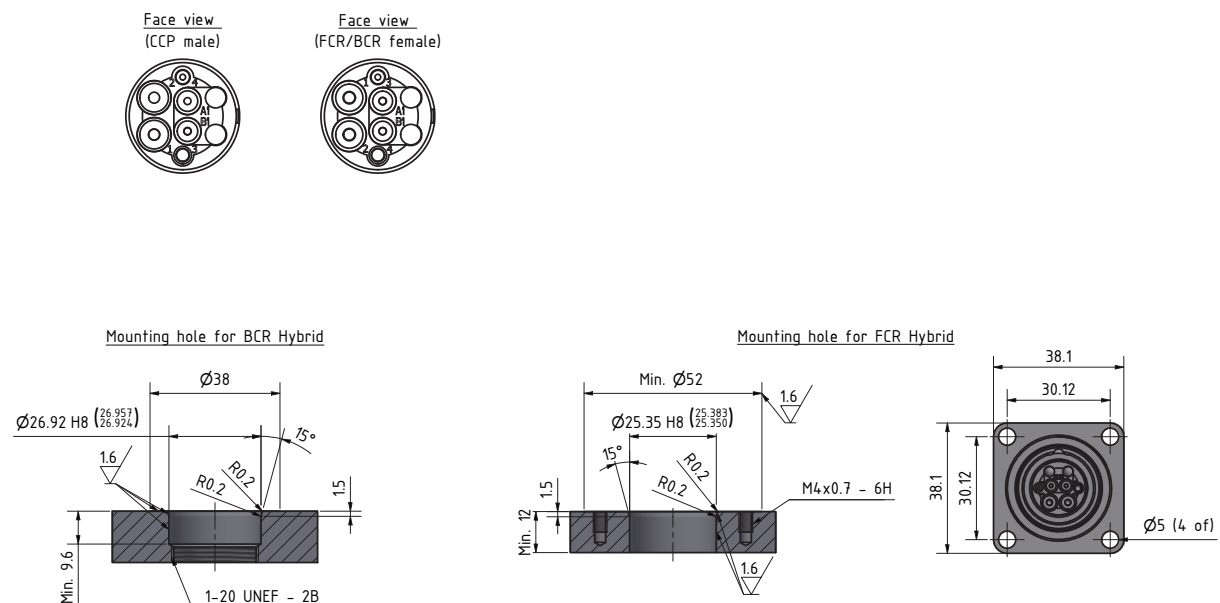
Wavelength:	850 to 1,300 nm
Attenuation:	Max 2.5 dB Typical 1.0-1.5 dB (when mated)
Fibre types:	50/125 µm
Optical passes:	2 passes

Environmental

Qualified pressure tested:	Mated 720 bar/10,400 psi
Depth rating:	Mated 600 bar/8,700 psi (dry box)
Temperature rating:	
Water:	-4 to 70°C/25 to 158°F
Air:	-25 to 70°C/13 to 158°F
Storage:	-25 to 70°C/13 to 158°F

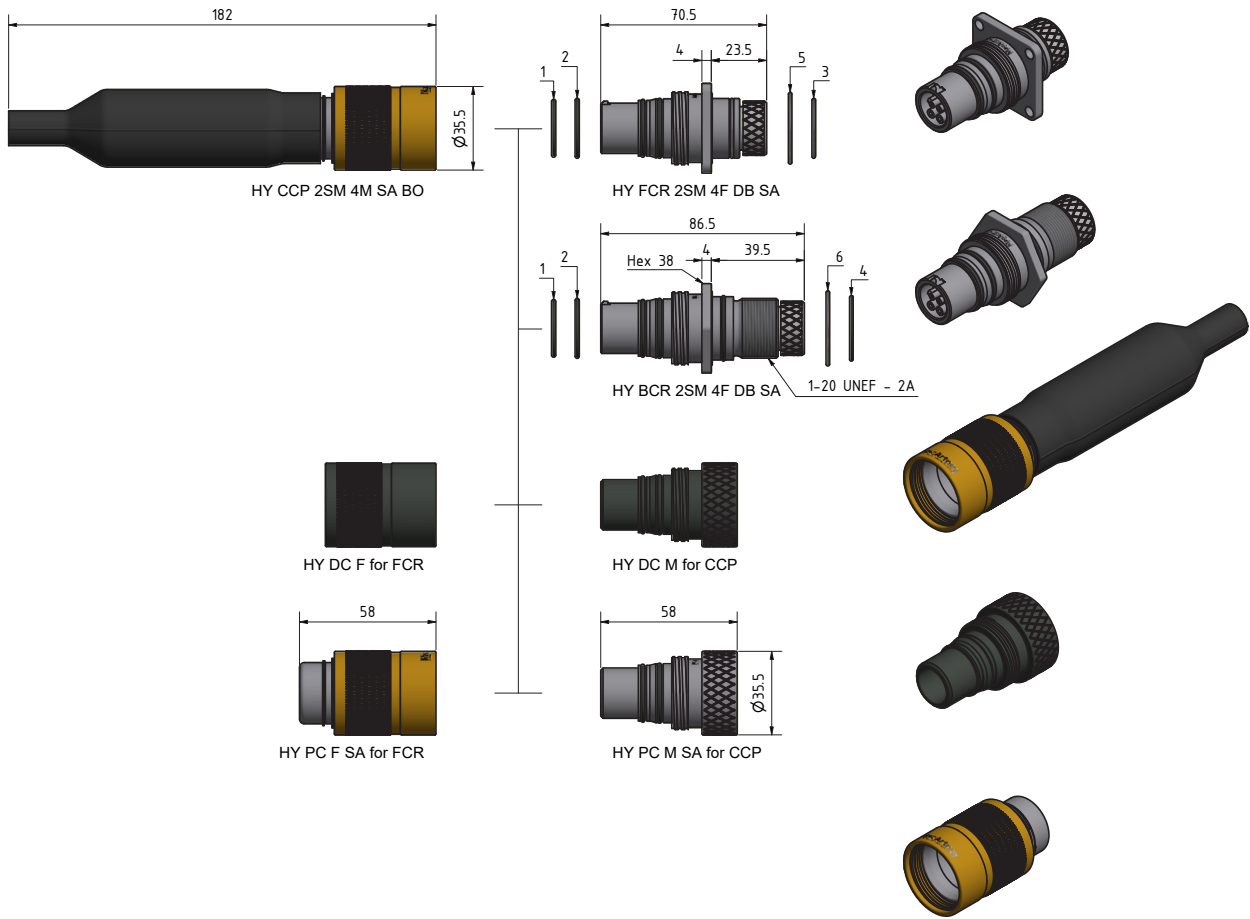
Recommended cable

Type 3644 CC or 3780 CC



Terminated by MacArtney only.

TrustLink



O-rings:

1. Ø20.35 x 1.78 FPM-75
2. Ø21.95 x 1.78 FPM-75
3. Ø22.50 x 1.50 FPM-75
4. Ø24.50 x 1.50 FPM-75
5. Ø27.50 x 1.50 FPM-75
6. Ø29.00 x 1.50 FPM-75

All measurements in millimetres (mm)

For technical information
and instructions

Scan QR code

