

SubConn® Power Ethernet Low Profile

13 contacts

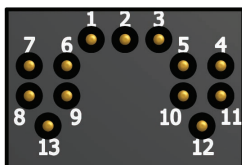
Connector specifications

Voltage rating	600 V DC/AC rms
Voltage rating on data wire	250 V DC/AC rms
Current rating on power wire	4 A per contact (max 16 A per connector)
Data rate	1 Gbit/s (up to 75 m)
Insulation resistance	> 200 Mohm
Contact resistance	< 0.01 ohm
Wet matings	> 500 (open face rated)
Temperature rating (water)	- 4 to 60°C, 25 to 140°F
Temperature rating (air)	- 40 to 60°C, - 40 to 140°F
Storage temperature rating	- 40 to 60°C, - 40 to 140°F
Qualified pressure tested	600 bar, 8,700 psi
Depth rating PEEK	300 bar, 4,350 psi

Material specifications

Connector body	Chloroprene rubber
Bulkhead body	Brass, stainless steel or titanium
Contacts	Female sockets in gold plated brass UNS - C36000 Male pins in gold plated beryllium copper
O-rings	Nitrile
Locking straps	Chloroprene rubber
Inline cable (3.3 ft, 100 cm)	4 pair 24 AWG, 0.20 mm ² PUR Power conductors 4 x 18 AWG, 0.82 mm ² Screen: Tinned copper braid
Bulkhead leads (3.3 ft, 100 cm)	CAT 5E patch cable, 5 x 20 AWG, 0.52 mm ² coloured PTFE incl. RJ 45 connector (not installed)

Face view (male)



Inline cable colour code

1 Black	4-5 Brown, Brown/white*	10-11 Green, Green/white*
2 Screen (orange wire on bulkhead)	6-7 Blue, Blue/white*	12 Red
3 White	8-9 Orange, Orange/white*	13 Green

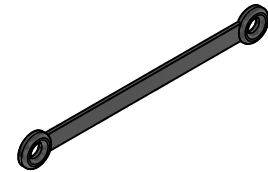
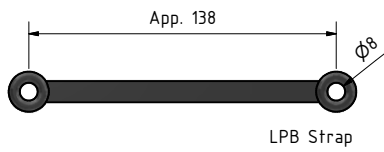
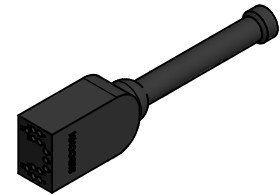
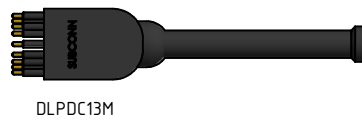
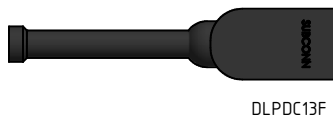
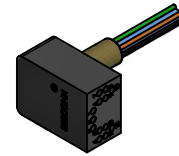
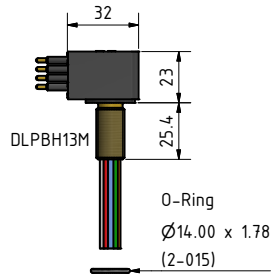
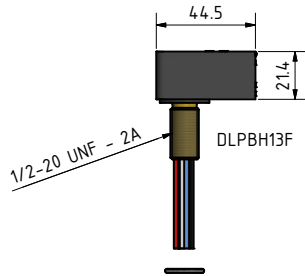
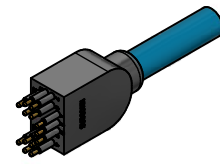
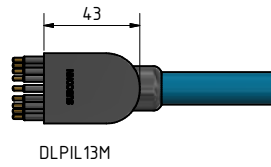
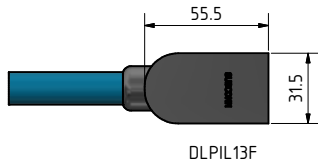
* Twisted pairs

Nominal cable outside diameter (OD)

PUR cable 0.550", 13.97 mm

Additional information

Standard RJ45 cannot be mounted on inline cable and will require a RJ45 Phoenix connector or equivalent.



Drawing information

Dimensions in mm (1 mm = 0.03937 inch)
Threads in inches (1 inch = 25.4 mm)

