

# SubConn® Ethernet Low Profile

## 9 contacts

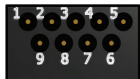
### Connector specifications

Voltage rating	250 V DC/AC rms
Data rate	1 Gbit/s (up to 75 m)
Insulation resistance	> 200 Mohm
Contact resistance	< 0.01 ohm
Wet matings	> 500
Temperature rating (water)	- 4 to 60°C, 25 to 140°F
Temperature rating (air)	- 40 to 60°C, - 40 to 140°F
Storage temperature rating	- 40 to 60°C, - 40 to 140°F
Qualified pressure tested	600 bar, 8,700 psi
Depth rating PEEK	300 bar, 4,350 psi

### Material specifications

Connector body	Chloroprene rubber
Bulkhead body	Brass, stainless steel, titanium, anodised aluminium or PEEK
Contacts	Female sockets in gold plated brass UNS - C36000 Male pins in gold plated beryllium copper
O-rings	Nitrile
Locking straps	Chloroprene rubber
Inline cable (100 cm, 3.3 ft)	4 pair 24 AWG, 0.20 mm <sup>2</sup> PUR Screen: Tinned copper braid
Bulkhead leads (100 cm, 3.3 ft)	CAT 5E patch cable incl. RJ 45 connector (not installed)

### Face view (male)



### Inline cable colour code

1-2 Brown, Brown/white*	7-8 Green, Green/white*
3-4 Blue, Blue/white*	9 Screen (orange wire on bulkhead)
5-6 Orange, Orange/white*	

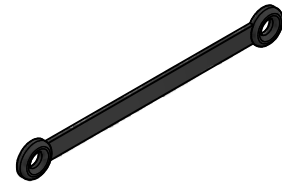
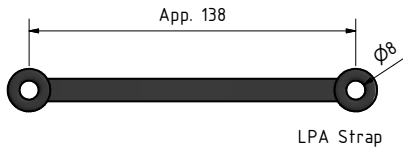
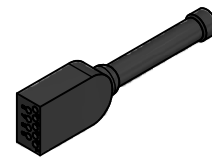
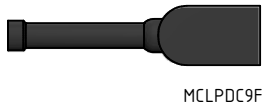
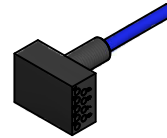
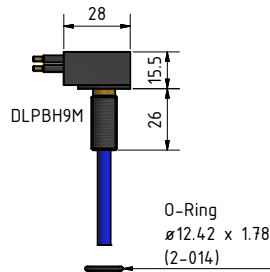
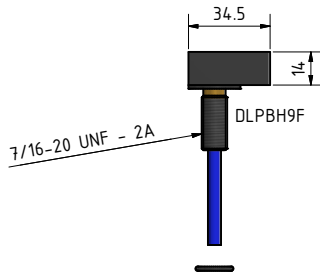
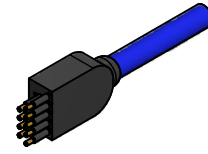
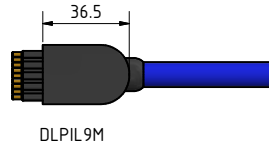
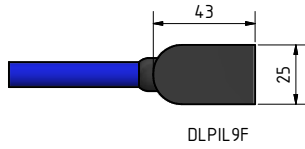
\* Twisted pairs

### Nominal cable outside diameter (OD)

PUR cable 0.410", 10.4 mm

### Additional information

Standard RJ45 cannot be mounted on inline cable and will require a RJ45 Phoenix connector or equivalent.



### Drawing information

Dimensions in mm (1 mm = 0.03937 inch)  
Threads in inches (1 inch = 25.4 mm)