

SubConn® Metal Shell 2000

2, 3, 4 contacts and Micro 10 and 12 contacts

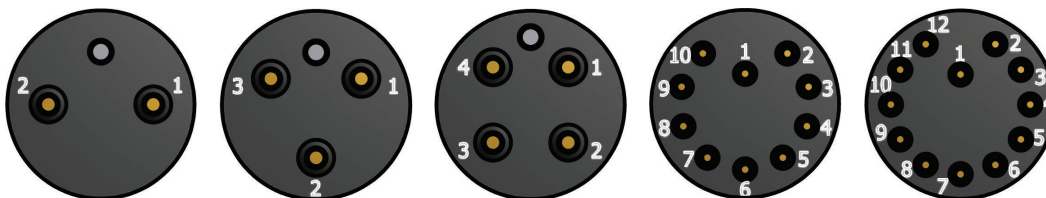
Connector specifications

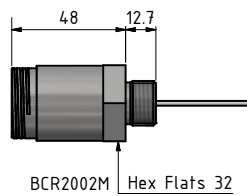
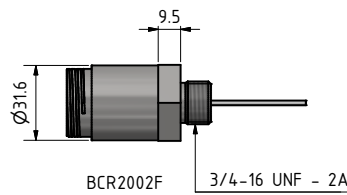
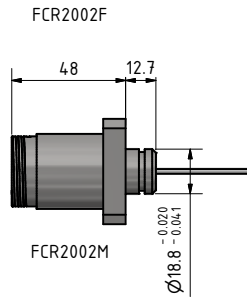
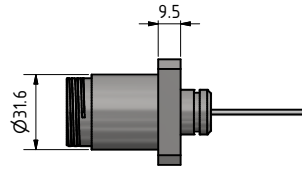
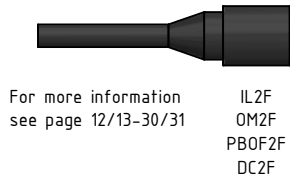
2, 3 and 4 contacts voltage rating	600 V DC/AC rms
10 and 12 contacts voltage rating	300 V DC/AC rms
2, 3 and 4 contacts current rating	10 A per contact (max 30 A per connector)
10 and 12 contacts current rating	5 A per contact (max 30 A per connector)
Insulation resistance	> 200 Mohm
Contact resistance	< 0.01 ohm
Wet matings	> 500
Temperature rating (water)	- 4 to 60°C, 25 to 140°F
Temperature rating (air)	- 40 to 60°C, - 40 to 140°F
Storage temperature rating	- 40 to 60°C, - 40 to 140°F
Qualified pressure tested	800 bar, 11,600 psi

Material specifications

Connector body	Chloroprene rubber
Connector housing	Stainless steel AISI 316 (other materials on request)
2, 3 and 4 contacts	Brass UNS - C36000
10 and 12 contacts	Female sockets in gold plated brass UNS - C36000
Location pin	Male pins in gold plated beryllium copper
O-rings	Stainless steel AISI 303
Locking sleeves	Nitrile
Snap rings	POM or stainless steel
2, 3 and 4 contact bulkhead leads (30 cm, 1 ft)	Stainless steel AISI 302
10 and 12 contact bulkhead leads (30 cm, 1 ft)	18 AWG 0.82 mm ² white tagged PTFE
	20 AWG 0.52 mm ² white tagged PTFE

Face view (male)

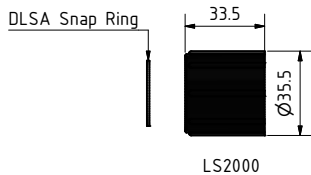
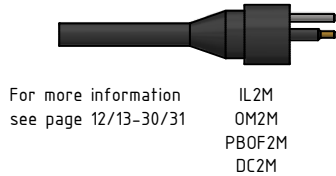
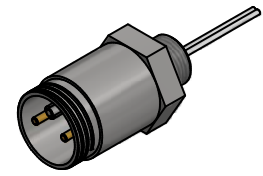
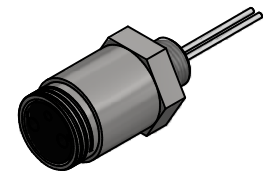
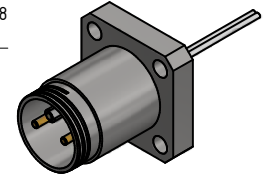
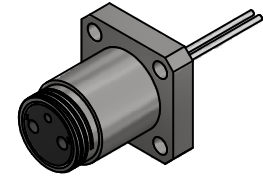




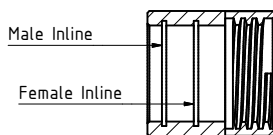
O-Ring
ø22.22 x 2.62

O-Ring
ø15.6 x 1.78
(2-016)

O-Ring
ø22.22 x 2.62



Snap ring placement



With male inline connector - snap ring in outer groove

With female inline connector - snap ring in inner groove

Drawing information

Dimensions in mm (1 mm = 0.03937 inch)
Threads in inches (1 inch = 25.4 mm)