

LUXUS Colour Zoom Camera II



The LUXUS colour zoom camera II is designed for use with ROV systems and is ideal for use in combination with the LUXUS power LED.

The camera is equipped with a zoom function and can be adjusted for focus, white balance, iris and a number of other settings. Focus and white balance also have auto settings. Camera functions can be controlled with the supplied software or hard wired. The camera uses a composite output but can also be supplied with other output types. The camera comes with a SubConn® or alternative customer-specified connector.

The LUXUS colour zoom camera II consumes just 5 W and can handle a wide range of DC power inputs from 9 to 36 VDC.

The camera housing is made from sandblasted and polished titanium and has a depth rating of 4,000 metres.

Features and benefits

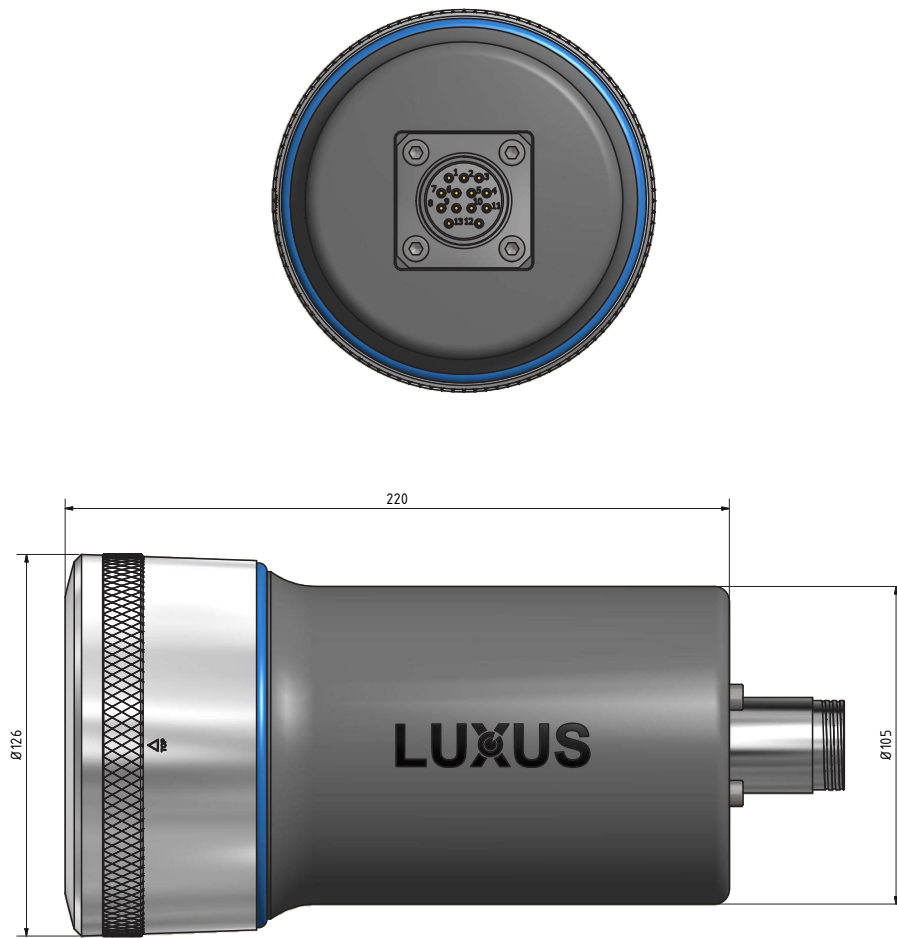
- High performance and image quality
- Zoom function
- Numerous adjustable settings
- 4,000 m depth rating

Applications

- General underwater inspection
- ROV systems
- Trencher systems
- Crawler systems
- Tow and drop camera systems
- Benthic sledge systems
- Underwater observatory systems
- Diving applications
- Winch and deck monitoring

Options

- Alternative connectors
- Custom wiring
- NTSC or PAL
- LUXUS universal mounting bracket
- LUXUS long line driver
- RS 485 communication



LUXUS
cameras

Data Acquisition

Specifications

Electrical

Power supply:	9-36 VDC
Power consumption:	5 W
Output:	Video composite 1 Vpp
Signal to noise ratio:	>52 dB
Control options:	RS 232 – others on request
Standard wiring:	1 power + 2 power Gnd 3 RS 232/RS 485 Tx 4 RS 232/RS 485 Rx 5 RS 232 Gnd 6 NC

Mechanical

Material:	Titanium
Standard connector:	SubConn® FCR2010 Ti
Other connectors:	On request
Dimensions:	See drawing (mm)
Weight:	5,800 g in air 4,100 g in water
Window/Lens:	Borosilicate glass

Optical

Sensor:	1/2.8" CMOS
Angle of view (horizontal):	
Air:	3.0° tele - 64.0° wide
Water:	2.0° tele - 48.0° wide
Sensitivity:	0.1 lux
Recommended illum.:	>100 lumen
Zoom (360x):	30 x optical, 12 x digital
Iris:	Manual or automatic
Focus:	Manual or automatic
White balance:	Manual or automatic
TV lines:	760
Image stabilization:	Yes

Environmental

Depth rating:	4,000 m
Test pressure:	600 bar
Storage temperature:	-20 to +60 °C
Operating temperature:	-5 to +60 °C