

3200

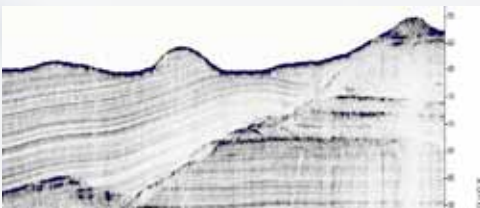
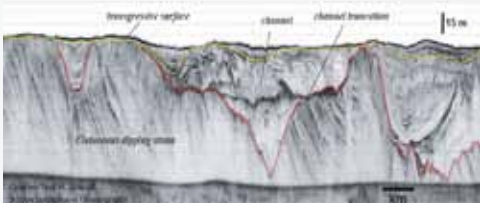
SUB-BOTTOM PROFILING SYSTEM

FEATURES

- Choice of 3 towfish depending on the application
- Low frequency for greater penetration
- Resolve layers to 4cm
- Pulses Library

APPLICATIONS

- Geological Surveys
- Environmental Site Investigations
- Sediment Classification
- Buried Pipeline & Cable Surveys
- Archeological Surveys
- Mining/Dredging Surveys
- Map, Measure & Classify sediment layers within the sea floor
- Map Natural Resources
- Pre & Post Marine Construction



The EdgeTech 3200 Sub-bottom Profiling System is a wideband Frequency Modulated (FM) sub-bottom profiler utilizing EdgeTech's proprietary Full Spectrum CHIRP technology. The 3200 generates high resolution images of the sub-bottom stratigraphy in oceans, lakes, and rivers and provides penetration of up to 200m.

The 3200 comes available with a choice of three stable, low drag towfish that operate at different frequencies and can be used at depths of up to 300m. The selection of towfish depends on the sub-bottom characteristics as well as the resolution and penetration requirements.

Along with a towfish, a standard 3200 system comes with a topside processor running EdgeTech's DISCOVER sub-bottom acquisition & processing software as well as a customer-specified length of tow cable. 3200 can also be interfaced to 3rd party software.

3200

SUB-BOTTOM PROFILING SYSTEM

KEY SPECIFICATIONS

| TOWFISH | SB-0512i | SB-216S | SB-424 |
|--|--|-----------|-----------|
| Frequency Range | 500 Hz–12 kHz | 2-16 kHz | 4-24 kHz |
| Vertical Resolution | 8–20 cm | 6-10 cm | 4-8 cm |
| Penetration (typical) | | | |
| In coarse calcareous sand | 20 meters | 6 meters | 2 meters |
| In clay | 200 meters | 80 meters | 40 meters |
| Length | 160 cm | 105 cm | 77 cm |
| Width | 124 cm | 67 cm | 50 cm |
| Height | 47 cm | 40 cm | 34 cm |
| Weight in Air | 204 kg | 76 kg | 45 kg |
| Weight in Water | 68 kg | 32 kg | 18 kg |
| Depth Rating | 300 meters | | |
| TOPSIDE PROCESSOR | | | |
| Hardware | Standard 19 inch rack mount with portable aluminum enclosure for transport | | |
| Operating System | Windows® 7 Professional | | |
| Display | High resolution 23" flat panel display | | |
| Archive | Hard drive and DVD-R/W | | |
| File Format | Native JSF or SEG-Y or XTF | | |
| Output | Ethernet | | |
| Power Input | 120/220 VAC | | |
| SYSTEM OPTIONS | | | |
| Pole Mount Brackets for SB-216 & SB-424, USBL acoustic tracking system | | | |



SB-0512i



SB-216S



SB-424

For more information please visit EdgeTech.com

info@EdgeTech.com | USA 1.508.291.0057